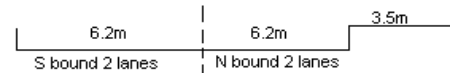


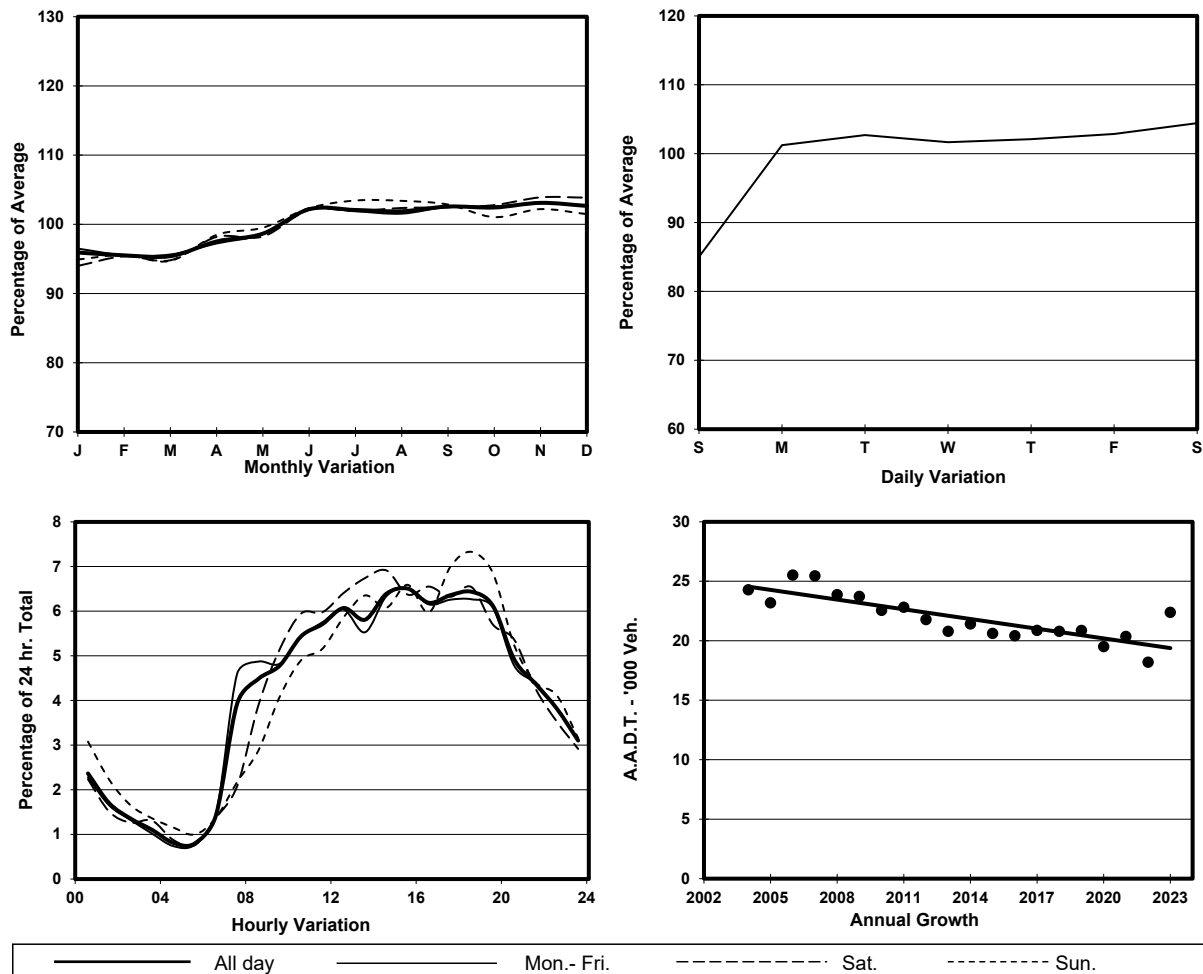
YEAR 2023

LINK YIM PO FONG ST (from SHANTUNG ST to WATERLOO RD)

COVERAGE (B) STATION 4215
ROAD NETWORK MAJOR
ROAD TYPE DISTRICT DISTRIBUTOR



1. TRAFFIC FLOW VARIATION AND GROWTH



2. TRAFFIC CHARACTERISTICS (BY DIRECTION)

Parameter	All - Day	Mon. - Fri.	Sat.	Sun.
SOUTH BOUND				
A.A.D.T.	11370	11760	11720	9760
R 12 / 24 - %	68.8	69.4	68.6	65.7
R 16 / 24 - %	87.9	88.4	87.1	86
AM Peak Hour	0900-1000	0800-0900	0900-1000	0900-1000
One-way flow at AM peak hour	550	620	580	430
T - % (AM)	-	2.2	-	-
PM Peak Hour	1800-1900	1800-1900	1700-1800	1800-1900
One-way flow at PM peak hour	760	760	800	770
T - % (PM)	-	0.7	-	-
Prop.of commercial vehicles - 16 hr.	-	2	-	-
NORTH BOUND				
A.A.D.T.	11010	11320	11970	9230
R 12 / 24 - %	67.4	67.8	69.2	63
R 16 / 24 - %	86.7	86.9	88.4	83.9
AM Peak Hour	0900-1000	0900-1000	0900-1000	0900-1000
One-way flow at AM peak hour	520	540	640	350
T - % (AM)	-	4.2	-	-
PM Peak Hour	1600-1700	1700-1800	1600-1700	1700-1800
One-way flow at PM peak hour	700	710	800	650
T - % (PM)	-	0.7	-	-
Prop.of commercial vehicles - 16 hr.	-	2.2	-	-

3. OTHER INFORMATION AND COMMENT

4. Vehicle classification and occupancy - Monday to Friday

Time		Class of vehicle									
		Motor Cycle	Private Car	Taxi	Private LB	PLB	Goods veh.		Non Fr. Bus	Fr. Bus	
							Light	M & H		SD	DD
0700-0800	Pro	4.5	39.2	31.7	3.8	4.5	10.6	0.0	4.5	0.9	0.2
	Ocp	1.2	1.3	2.0	6.2	12.8	1.4	0.0	18.7	22.0	1.0
0800-0900	Pro	4.4	51.9	23.1	0.0	6.1	11.8	1.3	0.9	0.5	0.0
	Ocp	1.1	1.3	1.8	0.0	11.1	1.4	1.7	3.0	14.4	0.0
0900-1000	Pro	1.7	31.9	31.0	1.2	4.6	24.4	2.1	2.5	0.5	0.2
	Ocp	1.0	1.3	1.7	4.0	7.0	1.5	2.0	1.5	21.8	1.0
1000-1100	Pro	4.8	31.4	38.0	1.3	2.6	20.5	0.9	0.0	0.4	0.0
	Ocp	1.0	1.4	1.7	2.3	7.0	1.4	2.0	0.0	20.0	0.0
1100-1200	Pro	6.7	38.1	30.5	0.9	3.6	17.5	1.3	0.9	0.4	0.1
	Ocp	1.0	1.3	1.6	3.5	5.6	1.3	1.7	6.0	21.0	1.0
1200-1300	Pro	8.6	31.4	33.2	0.4	4.7	20.2	0.4	0.7	0.5	0.0
	Ocp	1.0	1.3	1.6	4.0	7.2	1.4	3.0	20.5	21.7	0.0
1300-1400	Pro	10.0	36.6	27.9	1.2	3.3	19.5	0.4	0.4	0.6	0.0
	Ocp	1.0	1.4	1.8	3.0	12.3	1.4	1.0	1.0	18.8	0.0
1400-1500	Pro	6.4	43.1	26.1	1.9	3.0	18.1	0.8	0.0	0.6	0.0
	Ocp	1.1	1.5	2.0	1.8	9.1	1.6	2.5	0.0	19.7	0.0
1500-1600 Peak hour	Pro	7.1	40.2	28.1	1.9	3.4	16.5	1.5	0.8	0.6	0.0
	Ocp	1.1	1.4	2.3	4.4	10.6	1.4	1.3	17.5	25.3	0.0
1600-1700	Pro	4.4	45.9	25.4	2.0	4.0	16.1	0.0	1.6	0.5	0.0
	Ocp	1.0	1.4	2.0	5.0	10.6	1.4	0.0	5.5	20.2	0.0
1700-1800	Pro	10.1	52.2	19.2	0.9	5.5	11.0	0.0	0.5	0.6	0.0
	Ocp	1.1	1.3	1.9	2.5	11.0	1.2	0.0	14.0	26.8	0.0
1800-1900	Pro	9.1	44.2	32.8	0.0	6.4	5.5	0.5	0.9	0.6	0.0
	Ocp	1.2	1.4	2.2	0.0	15.2	1.3	2.0	20.5	21.8	0.0
1900-2000	Pro	11.5	45.7	30.5	0.4	5.6	5.9	0.0	0.0	0.4	0.0
	Ocp	1.1	1.6	1.9	4.0	15.5	1.2	0.0	0.0	17.5	0.0
2000-2100	Pro	13.7	42.7	33.8	0.5	4.2	4.2	0.0	0.0	0.7	0.1
	Ocp	1.2	1.5	2.0	3.0	12.9	1.1	0.0	0.0	12.2	1.0
2100-2200	Pro	7.2	45.3	33.4	0.0	6.6	6.0	0.6	0.6	0.4	0.0
	Ocp	1.0	1.8	2.3	0.0	11.2	1.7	2.0	11.0	11.0	0.0
2200-2300	Pro	12.1	56.6	22.9	0.0	6.1	1.3	0.0	0.7	0.3	0.0
	Ocp	1.1	1.6	2.3	0.0	9.8	2.0	0.0	1.0	21.5	0.0
16 hours	Pro	7.6	41.8	29.2	1.0	4.5	13.8	0.6	0.8	0.5	0.1
	Ocp	1.1	1.4	1.9	3.8	10.8	1.4	1.8	10.2	20.0	1.0

Legend: Pro. Proportion of vehicles in % (Sum may not add up to 100% due to figure rounding)*

Ocp. Average occupancy of vehicles including both driver and passengers*

M&H Medium and Heavy

* All traffic data are collected from combined bounds